



1 Ground Floor 1:400



2 Level 1 1:400



3 Level 2 1:400



4 Level 3 1:400

**GENERAL NOTES:**

- ALL WORKS TO COMPLY WITH BUILDING CODE OF AUSTRALIA, REQUIREMENTS OF RELEVANT STATUTORY AUTHORITIES/ LOCAL GOVERNMENT & RELEVANT AUSTRALIAN BUILDING STANDARDS
- DRAWINGS FOR THE PURPOSES OF DA ONLY (NOT FOR CONSTRUCTION) - FURTHER CONSULTANT/ AUTHORITY COORDINATION WILL BE REQUIRED AT CC STAGE WHICH MAY IMPACT ON DESIGN AND PLANNING LAYOUTS
- ARCHITECTURAL PLANS TO BE READ IN CONJUNCTION WITH CONSULTANTS DRAWINGS, SPECIFICATIONS & REPORTS
- COPYRIGHT OF DESIGN SHOWN HEREON IS RETAINED BY PBD ARCHITECTS AND AUTHORITY IS REQUIRED FOR ANY REPRODUCTION
- AREA SCHEDULES SUPPLIED ARE APPROXIMATE ONLY - FUTURE ALLOWANCE FOR VERTICAL SERVICE DUCTS, STRUCTURAL WALL SYSTEMS AND CONSULTANT INPUT WILL BE REQUIRED
- MINOR CHANGES TO FORM AND CONFIGURATION MAY BE REQUIRED WHEN DRAWINGS ARE SUBSEQUENTLY PREPARED FOR CONSTRUCTION PURPOSES AFTER THE GRANT OF DEVELOPMENT CONSENT

**LEGEND:**

AH ACCESS HATCH  
AC A/C CONDENSER UNITS  
FH FIRE HYDRANT  
FHR FIRE HOSE REEL  
FS FIRE STAIRS  
GC GARBAGE CHUTE  
HW HIGHLIGHT WINDOW  
MV MECHANICAL RISER TO FUTURE DETAIL  
MB MOTORBIKE  
R 240L RECYCLING BIN  
SK SKYLIGHT  
ST STORAGE  
LV ALUMINIUM ELLIPTICAL FIXED LOUVERS  
AW AWNING (TO FUTURE DETAIL)  
PS PRIVACY SCREEN (TO FUTURE SELECTION)

**MATERIALS LEGEND:**

GB GLASS BALUSTRADE (TO BCA/AUS STANDARDS)  
MF METAL FENCING (TO FUTURE SELECTION)  
OP OPAQUE GLASS (FROSTED)  
GL1 TINTED GREY GLASS  
GL2 FROSTED GLASS  
GL3 CLEAR GLASS  
GL4 GREY GLASS  
P1 WHITE PAINT FINISH  
P2 DARKER GREY PAINT FINISH  
P3 MID GREY PAINT FINISH  
P4 LIGHT GREY PAINT FINISH  
FB BRICK FINISH  
AFG DARK GREY ALUMINIUM FRAME  
SCR1 MID GREY METALWORK  
SCR2 BRONZE/CHAMPAGNE METALWORK

**LEGEND:**

Orange circle: MINIMUM 2 HRS OF DIRECT SOLAR ACCESS  
Tan circle: MINIMUM 15 MINS OF DIRECT SOLAR ACCESS  
Grey circle: NO DIRECT SOLAR ACCESS

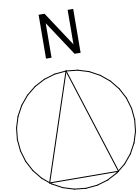
**SUMMARY**

**ADG [4A] : SOLAR & DAYLIGHT ACCESS**

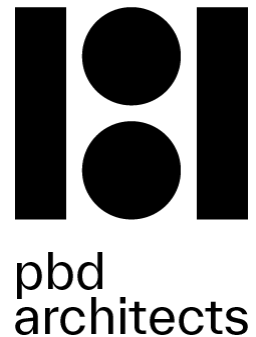
- LIVING ROOMS AND PRIVATE OPEN SPACES OF AT LEAST 70% OF APARTMENTS RECEIVE A MIN OF 2 HRS DIRECT SUNLIGHT BETWEEN 9AM AND 3 PM
- A MAXIMUM OF 15% OF APARTMENTS IN A BUILDING RECEIVE NO DIRECT SUNLIGHT BETWEEN 9AM AND 3PM

UNITS RECEIVING MIN 2HRS DIRECT SOLAR : 170 UNITS (75.9%)  
UNITS RECEIVING NO DIRECT SOLAR : 20 UNITS (8.9%)

Issue	Date	Description
1	22/05/2024	Development Application
2	20/12/2024	Issued for DA Advocacy
3	23/01/2025	Issued for DA Advocacy
4	29/01/2025	Issued for DA Advocacy
5	8/05/2025	Issued for DA Advocacy



**CLIENT:**  
**Meriton Group**



**pbd**  
architects

P - 02 9698 8140  
E - info@pbdarchitects.com.au  
W - pbdarchitects.com.au  
Level 2, 52 Albion Street,  
Surry Hills NSW 2010  
ABN 36 147 035 550  
Nominated Architect:  
Paul Buljevic NSW 7768

**PROJECT:**  
Pagewood Lot F  
16 Studio Drive, Eastgardens, NSW 2036

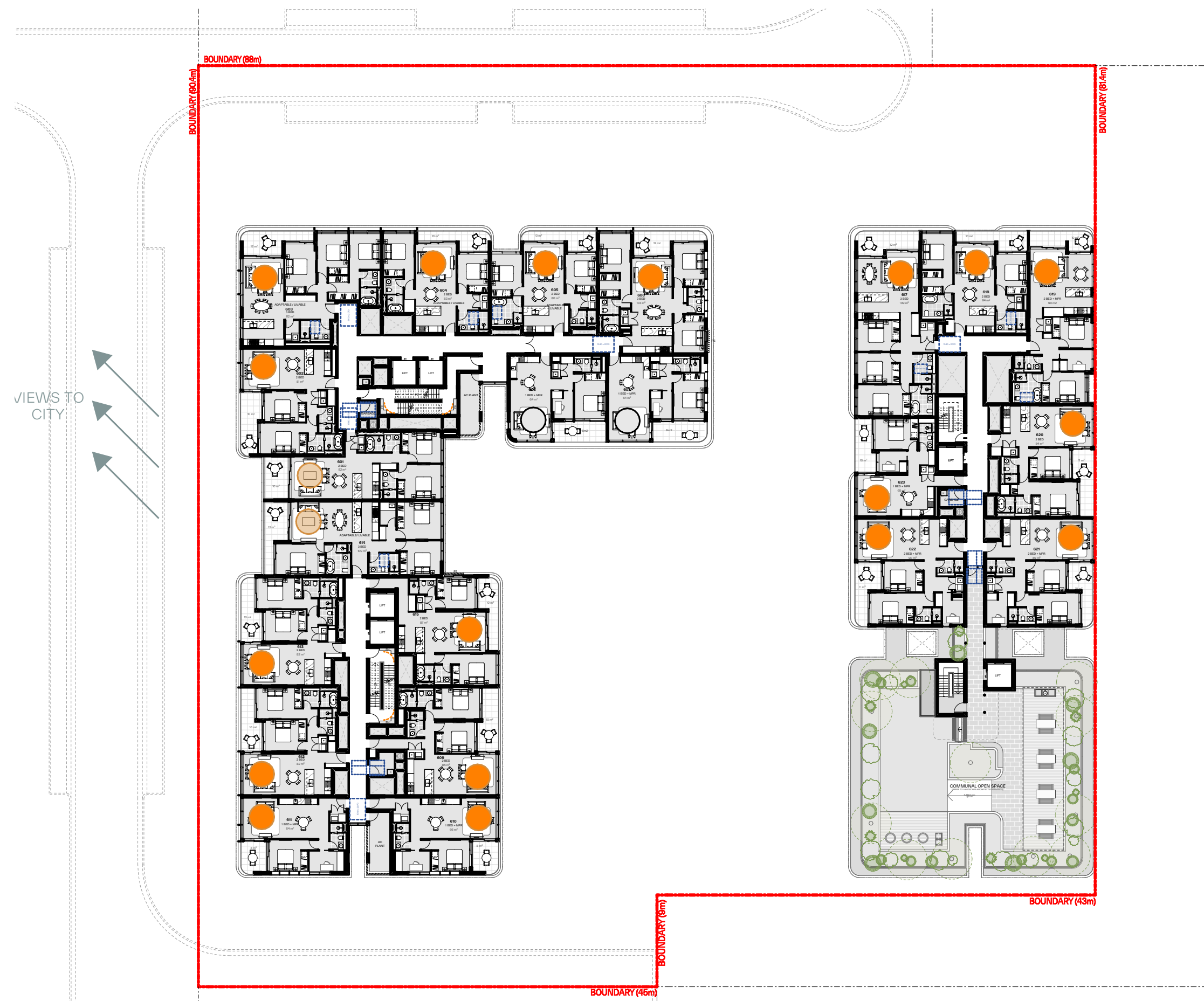
**DRAWING TITLE:**  
**Solar Access Diagram 1**

DRAWING BY: KA, AA	CHECKED BY: KA	DATE: 8/05/2025
SCALE: @A1	DRAWING NO: <b>DA600</b>	ISSUE: <b>5</b>
PROJECT NO: 2405		





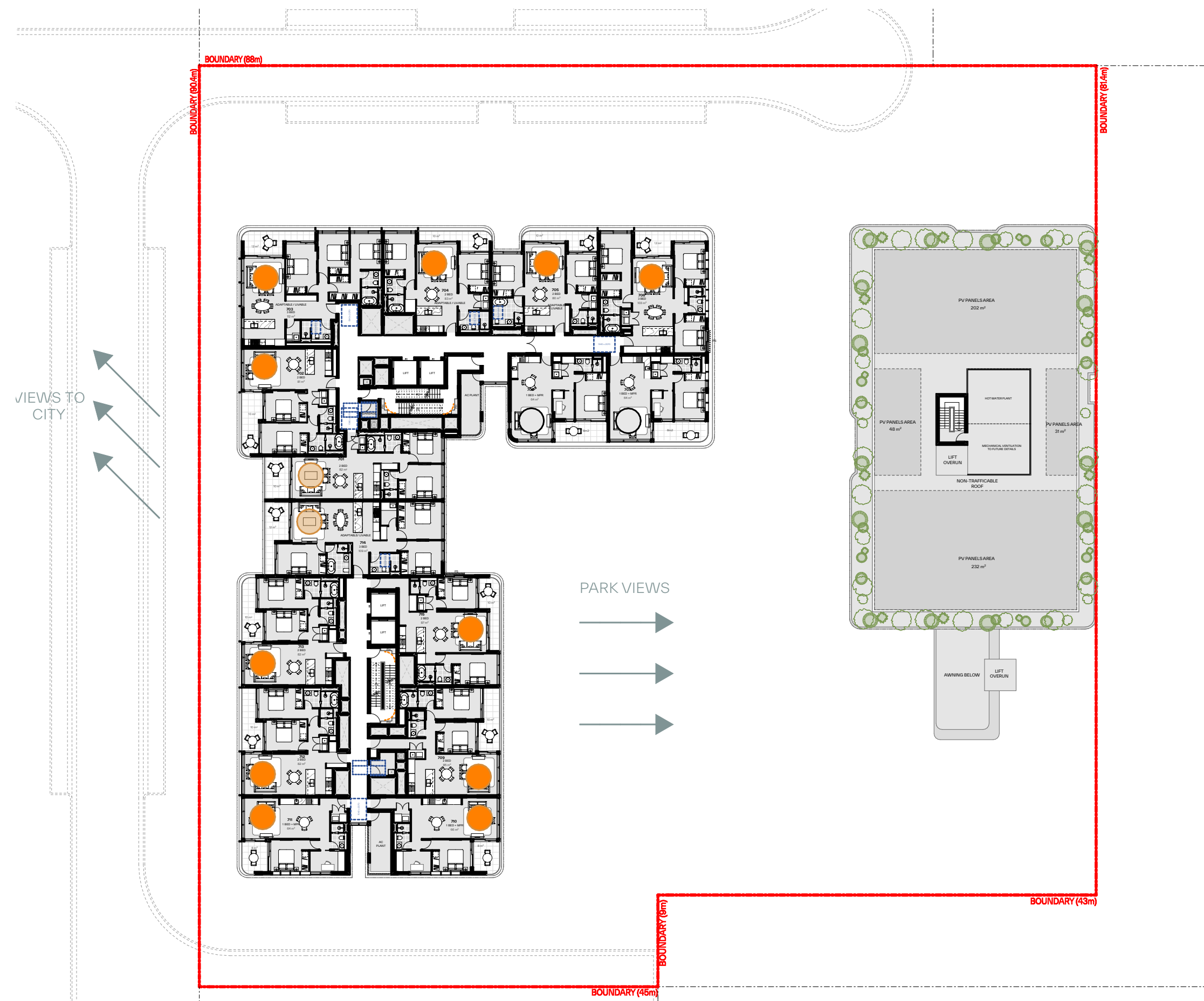
5	Level 4	1:400
---	---------	-------



7 Level 6 1:400



6	Level 5	1:400
---	---------	-------



8 Level 7 1:400

GENERAL NOTES:

- \* ALL WORKS TO COMPLY WITH BUILDING CODE OF AUSTRALIA, REQUIREMENTS OF RELEVANT STATUTORY AUTHORITIES/ LOCAL GOVERNMENT & RELEVANT AUSTRALIAN BUILDING STANDARDS.
- \* CONSULTANTS SHALL BE RESPONSIBLE FOR OBTAINING ALL NECESSARY PERMITS, FURTHER CONSULTANT/ AUTHORITY COORDINATION WILL BE REQUIRED AT CO STAGE WHICH MAY IMPACT ON DESIGN AND PLANNING LAYOUTS
- \* ARCHITECTURAL PLANS TO BE READ IN CONJUNCTION WITH CONSULTANTS DRAWINGS AND SPECIFICATIONS.
- \* COPYRIGHT OF DESIGN SHOWN HEREON IS RETAINED BY P/B ARCHITECTS AND AUTHORITY IS REQUIRED FOR ANY REPRODUCTION
- \* CONSULTANTS SHALL BE RESPONSIBLE FOR OBTAINING ALL FUTURE ALLOWANCES FOR VERTICAL SERVICE DUCTS, STRUCTURAL WALL SYSTEMS AND CONSULTANT INPUT WILL BE REQUIRED
- \* MINOR CHANGES TO FORM AND CONFIGURATION MAY BE REQUIRED WHEN DRAWINGS ARE SUBMITTED FOR CONSTRUCTION PURPOSES AFTER THE GRANT OF DEVELOPMENT CONSENT




LEGEND:

- |     |                                      |
|-----|--------------------------------------|
| AH  | ACCESS HATCH                         |
| AC  | A/C CONDENSER UNITS                  |
| FH  | FIRE HYDRANT                         |
| FHR | FIRE HOSE REEL                       |
| FS  | FIRE STAIRS                          |
| GC  | GARBAGE CHUTE                        |
| HW  | HIGHLIGHT WINDOW                     |
| MV  | MECHANICAL RISER TO FUTURE DETAIL    |
| MB  | MOTORBIKE                            |
| R   | 240L RECYCLING BIN                   |
| SK  | SKYLIGHT                             |
| ST  | STORAGE                              |
| LV  | ALUMINIUM ELLIPTICAL FIXED LOUVERS   |
| AW  | AWNING (TO FUTURE DETAIL)            |
| PS  | PRIVACY SCREEN (TO FUTURE SELECTION) |

**MATERIALS LEGEND:**

- |      |  |
|------|--|
| GB   | GLASS BALUSTRADE (TO BCA/AUS STANDARDS |
| MF   | METAL FENCING (TO FUTURE SELECTION)    |
| OP   | OPAQUE GLASS (FROSTED)                 |
| GL1  | TINTED GREY GLASS                      |
| GL2  | FROSTED GLASS                          |
| GL3  | CLEAR GLASS                            |
| GL4  | GREY GLASS                             |
| P1   | WHITE PAINT FINISH                     |
| P2   | DARKER GREY PAINT FINISH               |
| P3   | MID GREY PAINT FINISH                  |
| P4   | LIGHT GREY PAINT FINISH                |
| FB   | BRICK FINISH                           |
| AFG  | DARK GREY ALUMINIUM FRAME              |
| SCR1 | MID GREY METAL WORK                    |
| SCR2 | BRONZE/CHAMPAGNE METAL WORK            |

LEGEND:

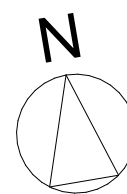
-  MINIMUM 2 HRS OF DIRECT SOLAR ACCESS
-  MINIMUM 15 MINS OF DIRECT SOLAR ACCESS
-  NO DIRECT SOLAR ACCESS

## SUMMARY

## ADG [4A] : SOLAR &amp; DAYLIGHT ACCESS

- LIVING ROOMS AND PRIVATE OPEN SPACES OF AT LEAST 70% OF APARTMENTS RECEIVE A MIN OF 2 HRS DIRECT SUNLIGHT BETWEEN 9AM AND 3 PM
- A MAXIMUM OF 15% OF APARTMENTS IN A BUILDING RECEIVE NO DIRECT SUNLIGHT BETWEEN 9AM AND 3PM

UNITS RECEIVING MIN 2HRS DIRECT SOLAR	: 170 UNITS (75.9%)
UNITS RECEIVING NO DIRECT SOLAR	: 20 UNITS (8.9%)

[illegible]

CLIENT:

Meriton Group



P - 02 9698 8140  
E - [info@pbdarchitects.com.au](mailto:info@pbdarchitects.com.au)  
W - [pbdarchitects.com.au](http://pbdarchitects.com.au)

Level 2, 52 Albion Street

Surry Hills NSW 2010

ABN 36 147 035 550  
Nominated Architect:

Paul Buljevic NSW 7768

PROJECT:

Pagewood Lot F

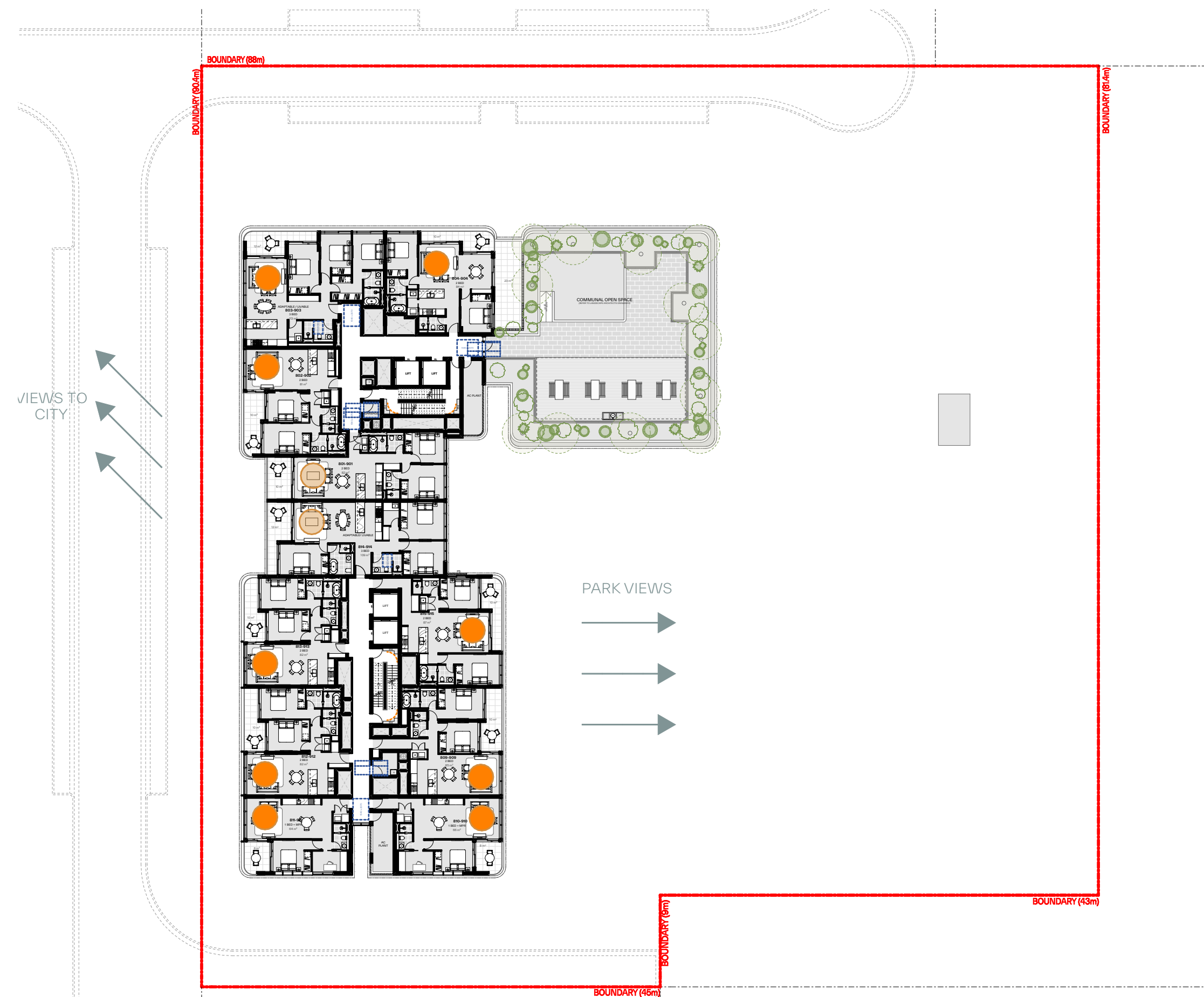
16 Studio Drive, Eastgardens, NSW 2036

DRAWING TITLE:

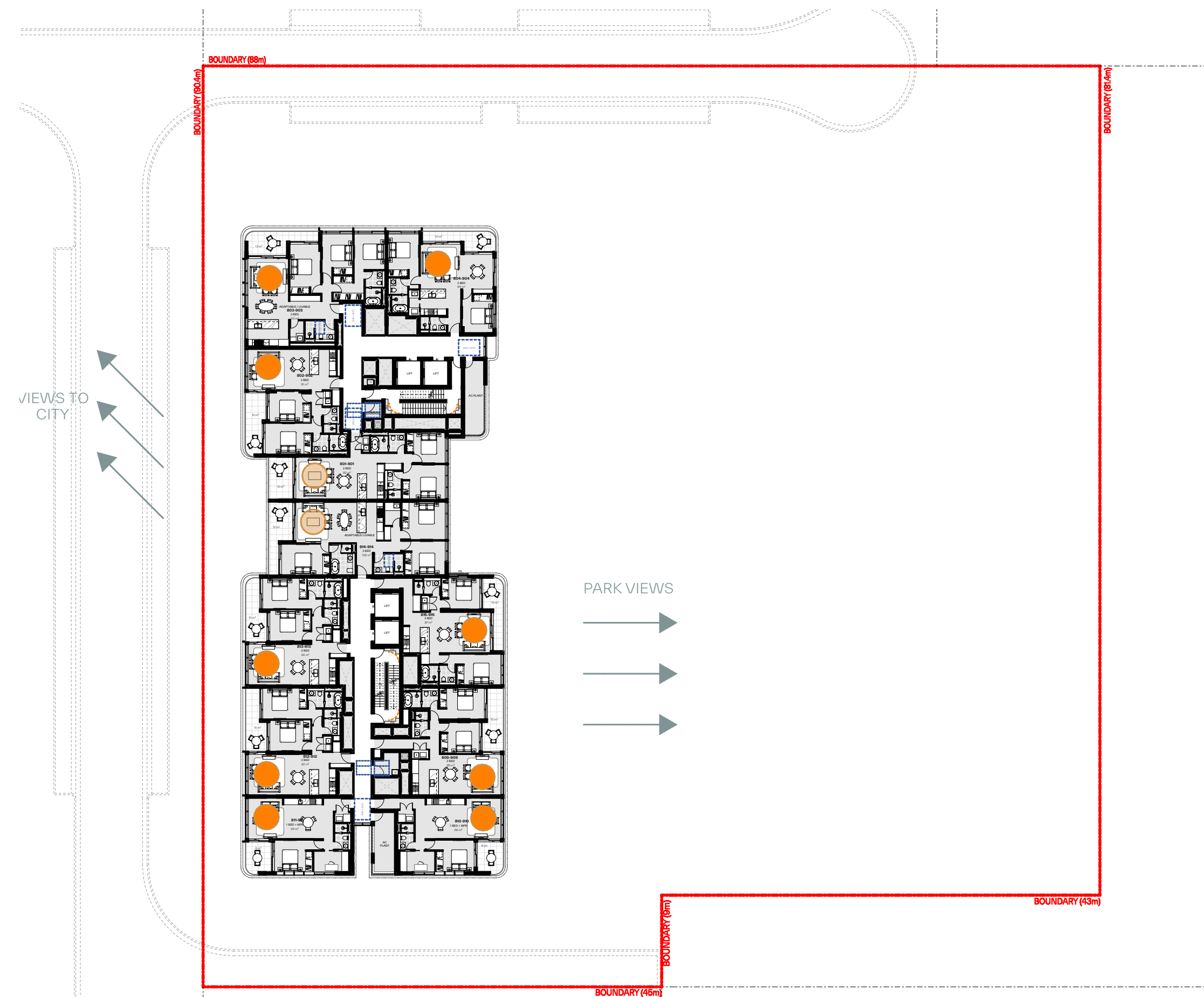
## Solar Access Diagram 2

DRAWING BY: KA, AA	CHECKED BY: KA	DATE: 8/05/2025
SCALE: @A1	DRAWING NO: <b>DA601</b>	ISSUE: <b>5</b>
PROJECT NO: 2405		

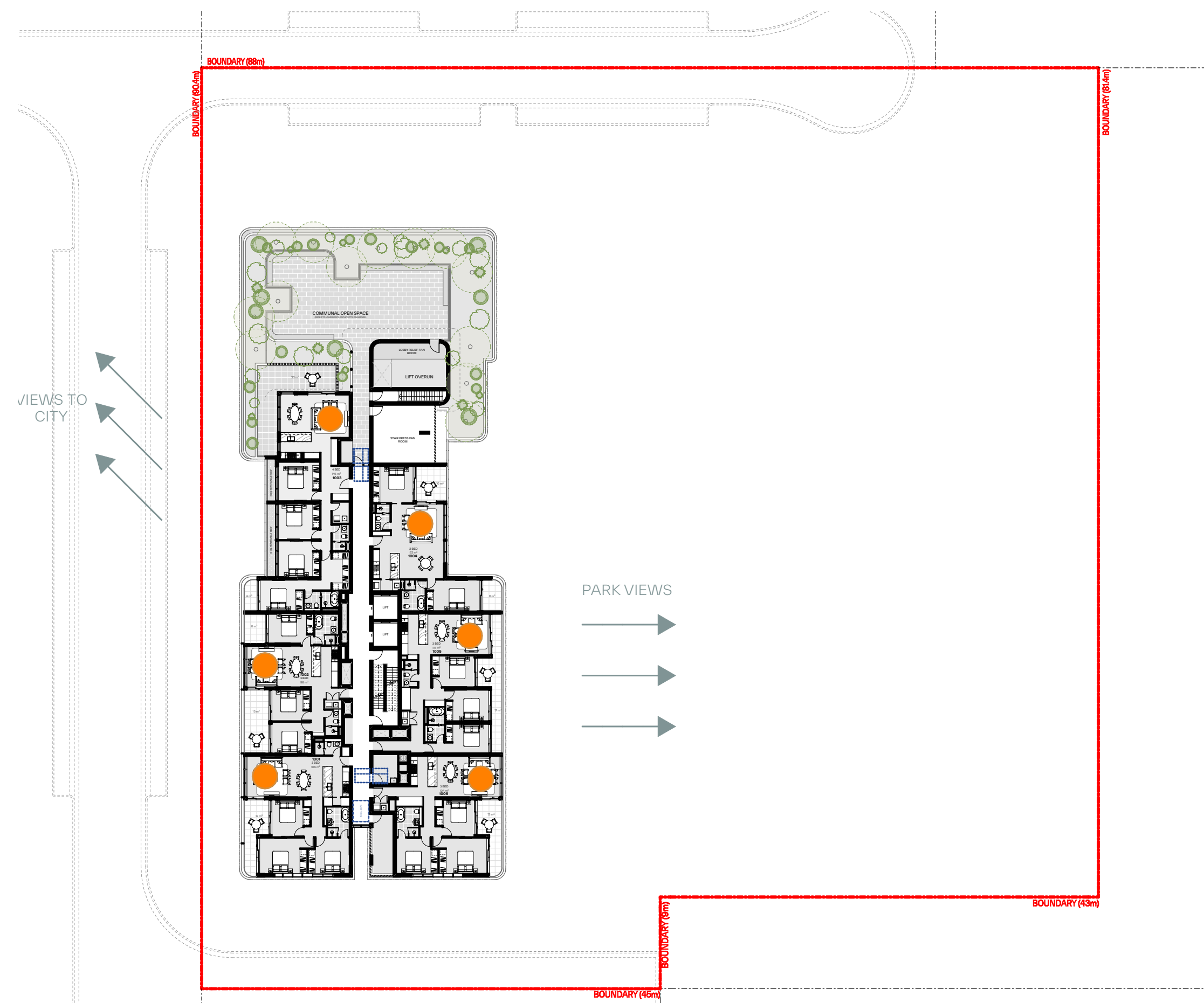




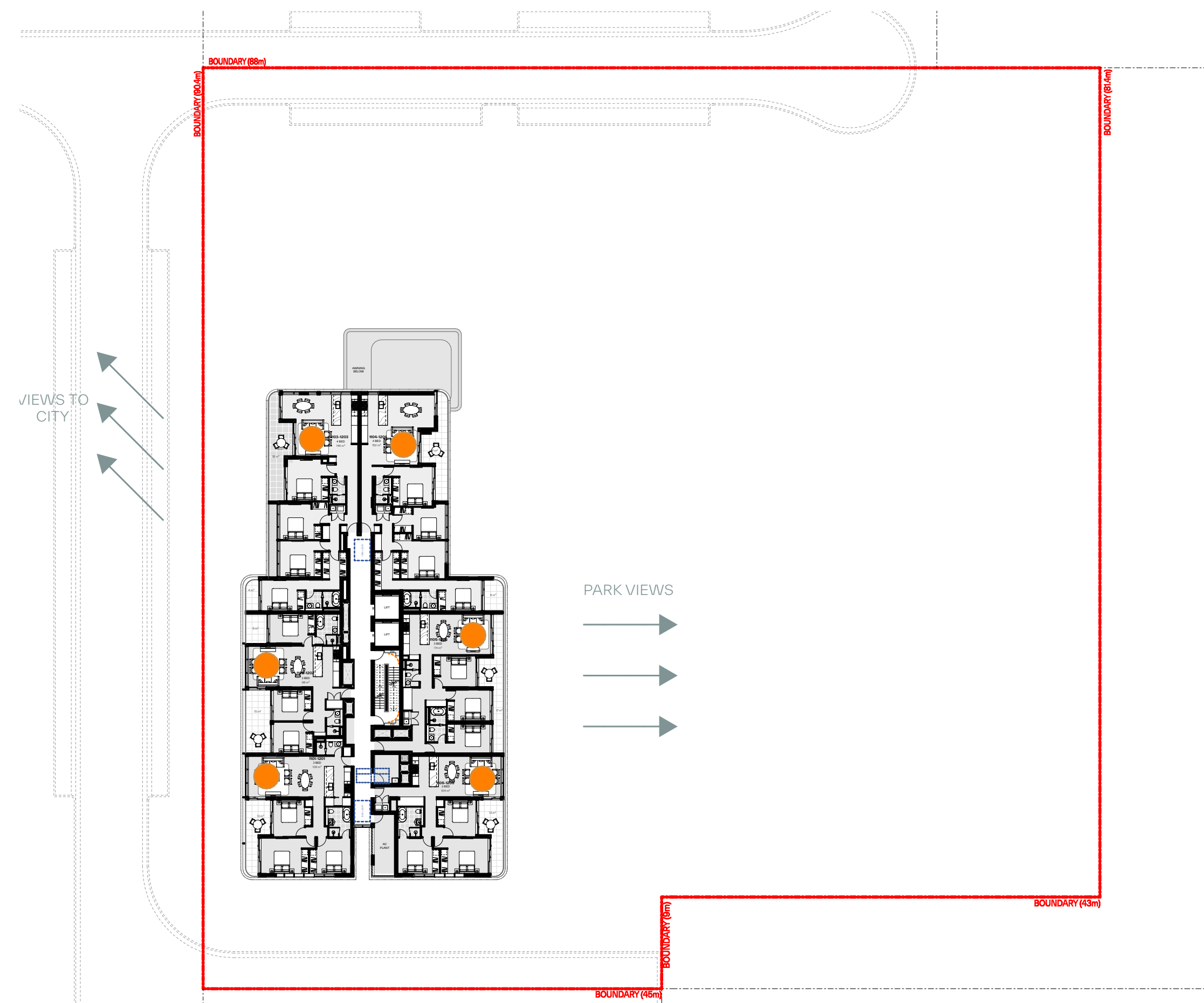
9	Level 8	1:400
---	---------	-------



10	Level 9	1:400
----	---------	-------



11	Level 10	1:400
----	----------	-------



12	Level 11	1:400
----	----------	-------

GENERAL NOTES:

- \* ALL WORKS TO COMPLY WITH BUILDING CODE OF AUSTRALIA, REQUIREMENTS OF RELEVANT STATUTORY AUTHORITIES/ LOCAL GOVERNMENT & RELEVANT AUSTRALIAN BUILDING STANDARDS
- \* CONSULTANTS SHALL BE RESPONSIBLE FOR OBTAINING ALL NECESSARY PERMITS, FURTHER CONSULTANT/ AUTHORITY COORDINATION WILL BE REQUIRED AT CO STAGE WHICH MAY IMPACT ON DESIGN AND PLANNING LAYOUTS
- \* ARCHITECTURAL PLANS TO BE READ IN CONJUNCTION WITH CONSULTANTS DRAWINGS
- \* COPYRIGHT OF DESIGN SHOWN HEREON IS RETAINED BY PBP ARCHITECTS AND AUTHORITY IS REQUIRED FOR ANY REPRODUCTION
- \* CONSULTANTS SHALL BE RESPONSIBLE FOR OBTAINING ALL FUTURE ALLOWANCES FOR VERTICAL SERVICE DUCTS, STRUCTURAL WALL SYSTEMS AND CONSULTANT INPUT WILL BE REQUIRED
- \* MINOR CHANGES TO FORM AND CONFIGURATION MAY BE REQUIRED WHEN DRAWINGS ARE SUBMITTED FOR CONSTRUCTION PURPOSES
- \* ALL CHANGES TO BE APPROVED BY PBP ARCHITECTS PRIOR TO THE GRANT OF DEVELOPMENT CONSENT




LEGEND:

- |     |                                      |
|-----|--------------------------------------|
| AH  | ACCESS HATCH                         |
| AC  | A/C CONDENSER UNITS                  |
| FH  | FIRE HYDRANT                         |
| FHR | FIRE HOSE REEL                       |
| FS  | FIRE STAIRS                          |
| GC  | GARBAGE CHUTE                        |
| HW  | HIGHLIGHT WINDOW                     |
| MV  | MECHANICAL RISER TO FUTURE DETAIL    |
| MB  | MOTORBIKE                            |
| R   | 240L RECYCLING BIN                   |
| SK  | SKYLIGHT                             |
| ST  | STORAGE                              |
| LV  | ALUMINIUM ELLIPTICAL FIXED LOUVERS   |
| AW  | AWNING (TO FUTURE DETAIL)            |
| PS  | PRIVACY SCREEN (TO FUTURE SELECTION) |

**MATERIALS LEGEND:**

- |      |   |
|------|---|
| GB   | GLASS BALUSTRADE (TO BCA/AUS STANDARDS) |
| MF   | METAL FENCING TO FUTURE SELECTION)      |
| OP   | OPAQUE GLASS (FROSTED)                  |
| GL1  | TINTED GREY GLASS                       |
| GL2  | FROSTED GLASS                           |
| GL3  | CLEAR GLASS                             |
| GL4  | GREY GLASS                              |
| P1   | WHITE PAINT FINISH                      |
| P2   | DARKER GREY PAINT FINISH                |
| P3   | MID GREY PAINT FINISH                   |
| P4   | LIGHT GREY PAINT FINISH                 |
| FB   | BRICK FINISH                            |
| AFG  | DARK GREY ALUMINIUM FRAME               |
| SCR1 | MID GREY METAL WORK                     |
| SCR2 | BRONZE/CHAMPAGNE METAL WORK             |

LEGEND:

-  MINIMUM 2 HRS OF DIRECT SOLAR ACCESS
-  MINIMUM 15 MINS OF DIRECT SOLAR ACCESS
-  NO DIRECT SOLAR ACCESS

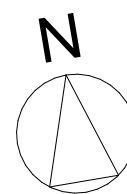
## SUMMARY

## ADG [4A] : SOLAR &amp; DAYLIGHT ACCESS

- LIVING ROOMS AND PRIVATE OPEN SPACES OF AT LEAST 70% OF APARTMENTS RECEIVE A MIN OF 2 HRS DIRECT SUNLIGHT BETWEEN 9AM AND 3 PM
- A MAXIMUM OF 15% OF APARTMENTS IN A BUILDING RECEIVE NO DIRECT SUNLIGHT BETWEEN 9AM AND 3PM

UNITS RECEIVING MIN 2HRS DIRECT SOLAR : 170 UNITS

	(75.9%)
UNITS RECEIVING NO DIRECT SOLAR	: 20 UNITS
	(8.9%)

[illegible]

CLIENT

Meriton Group



P - 02 9698 8140  
E - [info@pbdarchitects.com.au](mailto:info@pbdarchitects.com.au)  
W - [pbdarchitects.com.au](http://pbdarchitects.com.au)

Level 2, 52 Albion Street,  
Surry Hills NSW 2010

ABN 36 147 035 550  
Nominated Architect:  
Paul Buljovic NSW 7768

PROJECT:

Pagewood Lot F

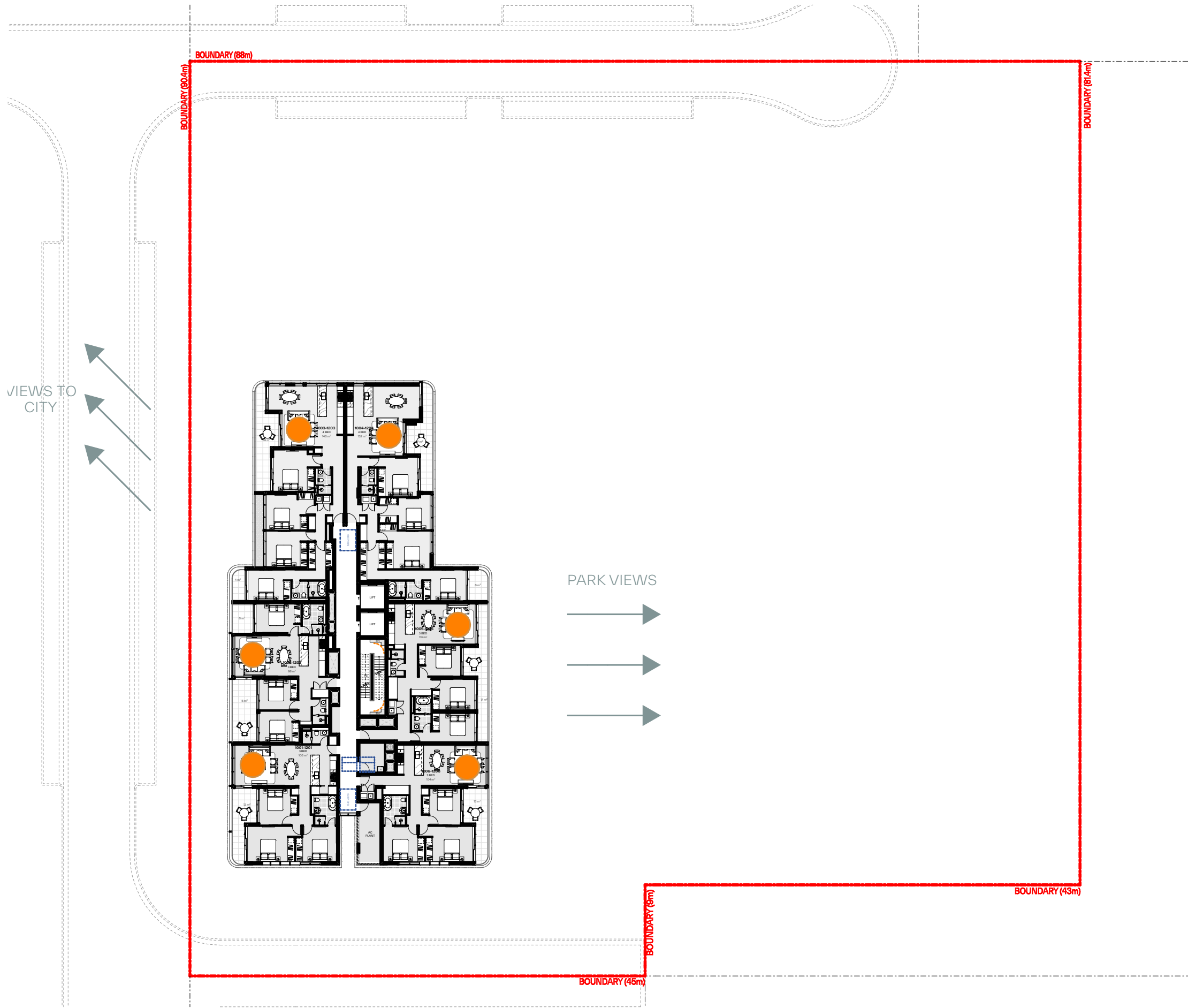
16 Studio Drive, Eastgardens, NSW 2036

DRAWING TITLE:

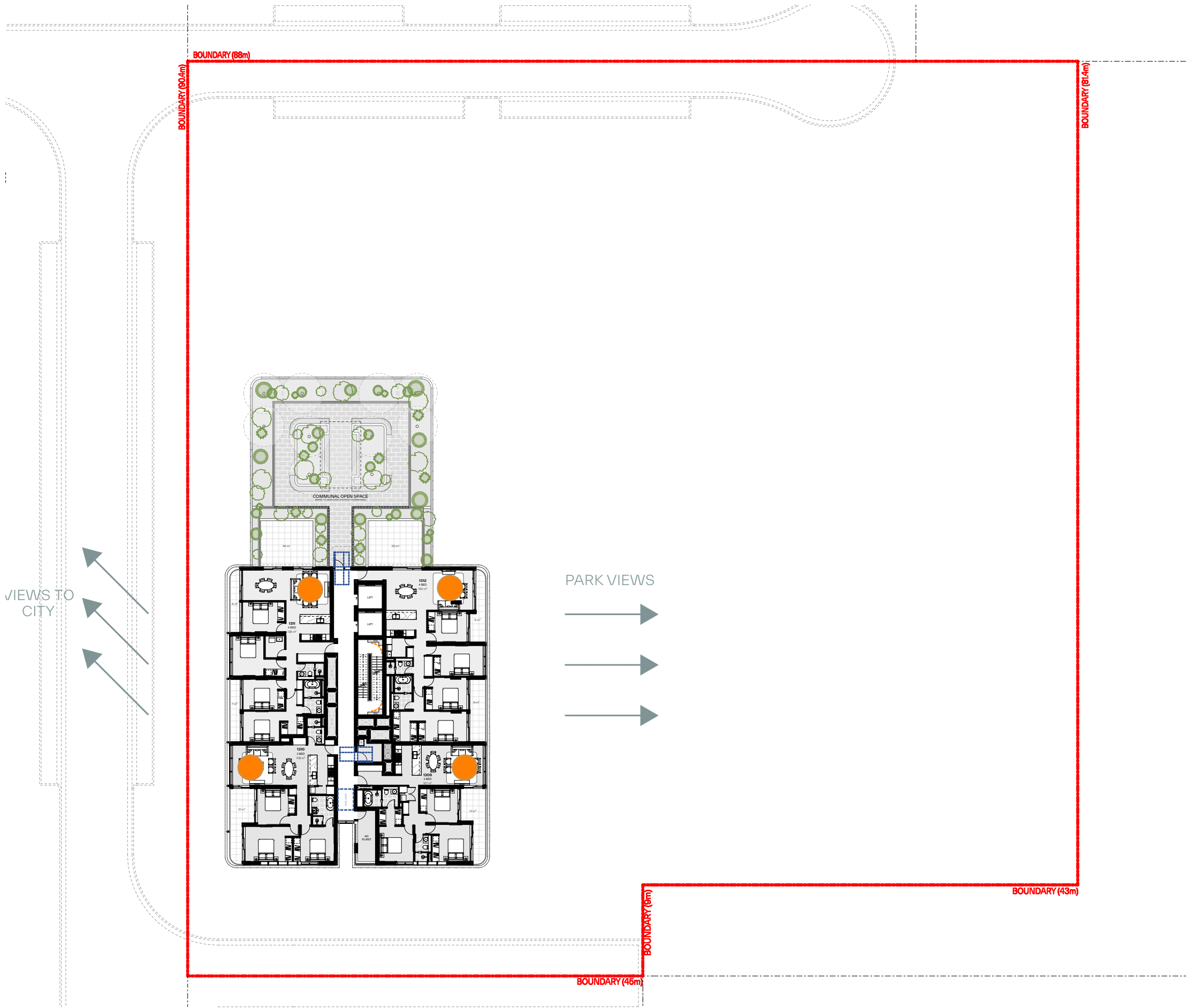
### Solar Access Diagram 3

DRAWING BY: KA, AA	CHECKED BY: KA	DATE: 8/05/2025
SCALE: @A1	DRAWING NO: <b>DA602</b>	ISSUE: <b>5</b>
PROJECT NO: 2405		





13 Level 12 1:400



14 Level 13 1:400

**GENERAL NOTES:**

- ALL WORKS TO COMPLY WITH BUILDING CODE OF AUSTRALIA, REQUIREMENTS OF RELEVANT STATUTORY AUTHORITIES/ LOCAL GOVERNMENT & RELEVANT AUSTRALIAN BUILDING STANDARDS
- DRAWINGS FOR THE PURPOSES OF DA ONLY (NOT FOR CONSTRUCTION) - FURTHER CONSULTANT/ AUTHORITY COORDINATION WILL BE REQUIRED AT CC STAGE WHICH MAY IMPACT ON DESIGN AND PLANNING LAYOUTS
- ARCHITECTURAL PLANS TO BE READ IN CONJUNCTION WITH CONSULTANTS DRAWINGS, SPECIFICATIONS & REPORTS
- COPYRIGHT OF DESIGN SHOWN HEREON IS RETAINED BY PBD ARCHITECTS AND AUTHORITY IS REQUIRED FOR ANY REPRODUCTION
- AREA SCHEDULES SUPPLIED ARE APPROXIMATE ONLY - FUTURE ALLOWANCE FOR VERTICAL SERVICE DUCTS, STRUCTURAL WALL SYSTEMS AND CONSULTANT INPUT WILL BE REQUIRED
- MINOR CHANGES TO FORM AND CONFIGURATION MAY BE REQUIRED WHEN DRAWINGS ARE SUBSEQUENTLY PREPARED FOR CONSTRUCTION PURPOSES AFTER THE GRANT OF DEVELOPMENT CONSENT

**LEGEND:**

AH ACCESS HATCH  
AC A/C CONDENSER UNITS  
FH FIRE HYDRANT  
FHR FIRE HOSE REEL  
FS FIRE STAIRS  
GC GARBAGE CHUTE  
HW HIGHLIGHT WINDOW  
MV MECHANICAL RISER TO FUTURE DETAIL  
MB MOTORBIKE  
R 240L RECYCLING BIN  
SK SKYLIGHT  
ST STORAGE  
LV ALUMINIUM ELLIPTICAL FIXED LOUVERS  
AW AWNING (TO FUTURE DETAIL)  
PS PRIVACY SCREEN (TO FUTURE SELECTION)

**MATERIALS LEGEND:**

GB GLASS BALUSTRADE (TO BCA/AUS STANDARDS)  
MF METAL FENCING (TO FUTURE SELECTION)  
OP OPAQUE GLASS (FROSTED)  
GL1 TINTED GREY GLASS  
GL2 FROSTED GLASS  
GL3 CLEAR GLASS  
GL4 GREY GLASS  
P1 WHITE PAINT FINISH  
P2 DARKER GREY PAINT FINISH  
P3 MID GREY PAINT FINISH  
P4 LIGHT GREY PAINT FINISH  
FB BRICK FINISH  
AFG DARK GREY ALUMINIUM FRAME  
SCR1 MID GREY METALWORK  
SCR2 BRONZE/CHAMPAGNE METALWORK

**LEGEND:**

● MINIMUM 2 HRS OF DIRECT SOLAR ACCESS  
● MINIMUM 15 MINS OF DIRECT SOLAR ACCESS  
○ NO DIRECT SOLAR ACCESS

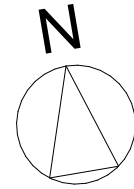
**SUMMARY**

**ADG [4A] : SOLAR & DAYLIGHT ACCESS**

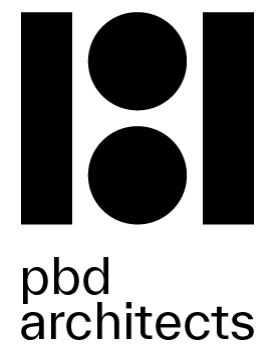
- LIVING ROOMS AND PRIVATE OPEN SPACES OF AT LEAST 70% OF APARTMENTS RECEIVE A MIN OF 2 HRS DIRECT SUNLIGHT BETWEEN 9AM AND 3 PM
- A MAXIMUM OF 15% OF APARTMENTS IN A BUILDING RECEIVE NO DIRECT SUNLIGHT BETWEEN 9AM AND 3PM

UNITS RECEIVING MINI 2HRS DIRECT SOLAR : 170 UNITS (75.9%)  
UNITS RECEIVING NO DIRECT SOLAR : 20 UNITS (8.9%)

Issue	Date	Description
1	22/05/2024	Development Application
2	20/12/2024	Issued for DA Advocacy
3	23/01/2025	Issued for DA Advocacy
4	29/01/2025	Issued for DA Advocacy
5	8/05/2025	Issued for DA Advocacy



**CLIENT:**  
**Meriton Group**



**pbd**  
architects

P - 02 9698 8140  
E - info@pbdarchitects.com.au  
W - pbdarchitects.com.au

Level 2, 52 Albion Street,  
Surry Hills NSW 2010

ABN 36 147 035 550  
Nominated Architect:  
Paul Buljevic NSW 7768

**PROJECT:**  
Pagewood Lot F  
16 Studio Drive, Eastgardens, NSW 2036

**DRAWING TITLE:**  
**Solar Access Diagram 4**

DRAWING BY: KA, AA	CHECKED BY: KA	DATE: 8/05/2025
SCALE: @A1	DRAWING NO: <b>DA603</b>	ISSUE: <b>5</b>
PROJECT NO: 2405		